



## SUPPORT THE WISCONSIN LIONS FOUNDATION

*Learn how to support our statewide projects and ways to give*



Wisconsin  
Lions Camp



Eyeglass  
Recycling



Vision  
Screening



Hearing



Diabetes  
Awareness



## About Wisconsin Lions Foundation

### Wisconsin Lions Foundation, Inc.

The Wisconsin Lions Foundation, Inc. (WLF) was established in 1956 by the Wisconsin Lions Clubs to be the administrative arm of the Wisconsin Lions Camp, which was started to serve youth who are Blind or visually impaired. As a 501(c)(3) non-profit organization, WLF has grown to serve thousands of youth and adults across the state.

Our mission of “Reaching, Touching and Improving Lives” is accomplished through our work in our five statewide projects:



Wisconsin Lions Camp, serving up to 1,200 youth and adults with disabilities free of charge each summer.



Eyeglass Recycling, processing over one million pairs of glasses a year to be used in missions and trips to developing countries.



Vision Screening, using screening devices and eye charts to catch potential eye issues in children across the state.



Hearing, recycling used hearing aids for credit to provide new hearing aids to those who cannot afford them.



Diabetes Awareness, providing materials and resources to help Wisconsin residents understand their risks and how to prevent diabetes.

Through our fundraisers, Lions Club donations and donations from individuals, businesses and other supporters, we are able to positively impact the lives of people every day. We invite you to learn more about our projects and how you can join us in making a difference.

Learn more about our statewide projects by visiting [wlf.info](http://wlf.info)

# Wisconsin Lions Foundation History

## 1956

- Resolution passed to purchase the Camp with 240 acres purchased for \$18,000
- Opening session for youth who are Blind or Visually Impaired - 26 attended

## 1957

- Formal dedication of Camp
- Dining Hall built
- Maples, Birches, Oakes, Traders, Explorers, Frontiers, Lakewoods, and Pioneers cabins built

## 1959

- Elms and Trailblazers cabins built

## 1960

- Property Manager's house and garage built

## 1961

- Memorial Building built

## 1964

- First year of adults who are Blind or Visually Impaired
- 40 acres purchased on the south side
- Director's cabin built

## 1966

- First year of youth with Intellectual Disabilities or Autism
- Totem Pole #1 installed

## 1967

- Boys' and girls' bathhouses built

## 1969

- First year of youth who are Deaf or Hard of Hearing
- 20 acres purchased on north side
- Health Lodge and Crafts buildings built
- Hemlocks and Pines cabins built

## 1971

- Willows, Hodags, Pathfinders, and Ravens cabins built
- 100 acres added to the north and west of main Camp

## 1974

- Tamaracks cabin built

## 1976

- Off camp trip program added

## 1977

- Rental program added

## 1978

- New Recreation/Storage Building built

## 1979

- Environmental Education program added
- Swimming Pier purchased

## 1980

- Program began for Danish Counselors
- Lumberjacks Cabin used as 11th Boys' Cabin

## 1981

- Indian Hollow developed by campers who are Deaf or Hard of Hearing
- Leadership program developed
- Renovation of Health Lodge and Crafts building
- Additional boys' bathhouse built
- Hodge House built
- Foundation Celebrates 25th Year Anniversary

## 1983

- Nature Center built
- Totem Pole #2 installed ("NA-WAK-WA")

## 1984

- Dry storage building built

## 1986

- Pinewood Lodge built

## 1987

- Swimming area expanded
- Ropes Course program added
- Trading Post built
- Dining Hall expanded

## 1988

- Pinewood Lodge lower level completed
- New main entrance gate built

## 1989

- Phase 1 Lions Lake dredging
- Nature Center expanded

## 1991

- Memorial Building Office renovated

## 1992

- Memorial Building bathrooms renovated
- Wood shed built

## 1994

- 40 acres purchased on the south side

## 1995

- Regional Eyeglass Recycling Center built

## 1997

- First and Second of nine year-round Duplex Cabins built

## 1998

- Third and Fourth of nine year-round Duplex Cabins built

## 1999

- Climbing Tower built
- Friends and Honor Garden built
- Fifth and Sixth of nine year-round Duplex Cabins built
- Trading Post expanded

## 2000

- New Rope Swing installed
- Seventh and Eighth of nine year-round Duplex Cabins built
- First year of youth with Diabetes
- Maintenance Shop/Storage built

## 2001

- Ninth of Nine year-round Duplex Cabins built
- Totem Pole #3 installed

## 2002

- Wisconsin Lions Foundation, Inc. Offices moved to expanded Eyeglass Recycling Center

## 2003

- Sturm Memorial Dining Hall renovated
- Dry Storage building removed

## 2004

- High & Low Challenge Course renovated

## 2005

- New Low Rope Elements added

## 2006

- Rope Swing replaced
- Foundation Celebrates 50th Year Anniversary
- Performing Arts program added
- Health Lodge resolution passed, construction began

## 2007

- Health Lodge built in time for summer season

## 2008

- New elements added to both High and Low Ropes Course

## 2009

- Indian Hollow project completed - electricity and handrail added

## 2010

- Memorial roof project of flat roof removal and re-shingling

## 2011

- Totem Pole #3 removed due to deterioration

## 2012

- Storage shed rebuilt - destroyed by windstorm
- Temporary 18 ft. Totem Pole installed ("MISCH-KEE-KEE")

## 2014

- Totem Pole #4 installed
- Sensory Wall built

## 2015

- Storage Shed rebuilt - destroyed by fire

## 2017

- Gaga Pit installed

## 2018

- Adventure Course & Sun High Ropes built
- Friends & Honors Garden Addition started

## 2019

- Friends & Honors Garden Addition completed
- First year of Youth with Epilepsy

## 2021

- 9-Square in the Air installed
- Disc Golf Course complete

## 2022

- Solar panels installed on Duplex Cabin 1
- Staircase in boys' area redone
- Trail around lake resurfaced

## 2023

- Adventure Course shelter built
- Horseshoe Pits redone
- Disc Golf Open to the public
- Rentals Office opened
- Shade structures complete in swimming & boating areas
- Dining Hall Ramp entrance redone
- Circle around Trading Post redone
- Multipurpose Court started

## 2024

- Multipurpose Court completed
- Eyeglass Recycling Storage Shed built
- Climbing Tower replaced
- Bouldering Wall built
- SOLOS Automatic Lensometers added to Eyeglass Recycling Center
- Green Initiative in Eyeglass Recycling Center to reduce waste implemented





## About Wisconsin Lions Camp

### Lions Camp

Since 1956, Lions Camp has been dedicated to providing a quality camping experience for residents of Wisconsin with disabilities. Our primary objective is to provide a fun, safe and memorable camping experience which will have a positive impact on the camper's life.



#### Cost

There is no cost for any of the Camp sessions. A \$25 refundable application deposit is required to prevent no-shows.

#### Sessions

Sessions run Sunday through Thursday. Campers are responsible for their own transportation to and from Lions Camp. Volunteers will be called on to provide transportation for campers, as needed.

#### Activities

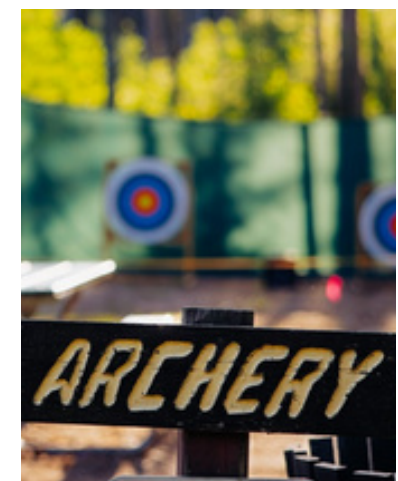
The daily schedule begins at approximately 7 a.m. and ends at 9 p.m. Campers have a rest period each afternoon. Some of the activities offered are swimming, canoeing, paddle boating, fishing, archery, arts and crafts, ropes course and a variety of non-competitive sports. All activities are supervised by trained staff.

#### Applications

Camper and staff applications can be obtained by contacting the Camp Office or on our website: [www.wisconsinlionscamp.com](http://www.wisconsinlionscamp.com). Camper applications are available each year in January. Staff applications are available in November and as needed throughout the year.

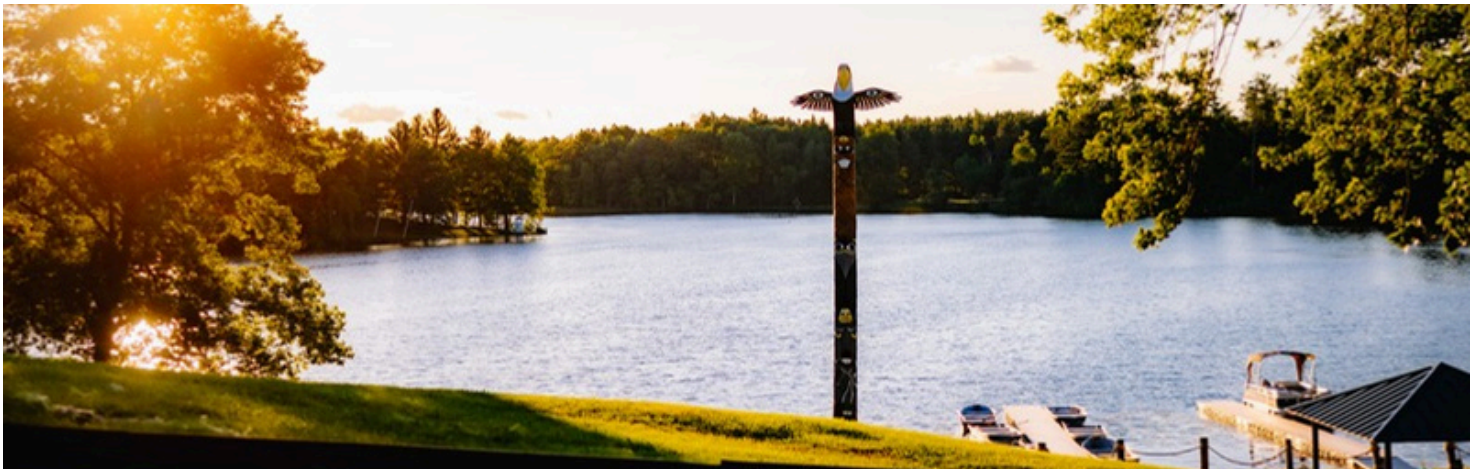
#### Eligibility

In general, all campers must be a resident of the State of Wisconsin or attending school in the State of Wisconsin. They must be independent in their self-care skills, including being fully toilet trained. They must be socially and behaviorally able to function within a 1:6 staff to camper ratio. Specific requirements can be found on our website.



Learn more about Lions Camp at [wisconsinlionscamp.com](http://www.wisconsinlionscamp.com)





# About Wisconsin Lions Camp

## Populations Served

### Youth who are Deaf or Hard of Hearing

Ages 6-17 with any of the following degree of hearing loss: profoundly deaf, mild, moderate or severe hearing loss (20-90 db loss) without amplification in either or both ears. They must also be receiving or are eligible to receive support services.

### Youth who are Blind or Visually Impaired

Ages 6-17 with any of the following degree of vision loss: totally blind, legally blind (20/200), low vision - vision of 20/40 or less with correction, or vision in one eye only. They must also be receiving or are eligible to receive support services.

### Youth with Intellectual Disabilities or Autism

Ages 10-17 with an educational placement in a program serving those with intellectual disabilities, autism, or receiving other services. Educationally or socially functions as having an intellectual disability or autism.

### Youth with Diabetes

Ages 10-17 with a current diagnosis of type 1 or 2 diabetes and is at least one year post diagnosis at camp time.

### Youth with Epilepsy

Ages 6-17 with a primary diagnosis of epilepsy or other seizure disorder.

### Adults who are Blind or Visually Impaired

Ages 18+ with the same degree of vision loss as required for youth. Must be able to function independently.

### Adults who are Deaf or Hard of Hearing

Ages 18+ with the same degree of hearing loss as required for youth. Must be able to function independently.

### Adults with Intellectual Disabilities or Autism

Ages 18-25 who previously attended Lions Camp as a youth and educationally or socially functions as having an intellectual disability or autism. These campers are drawn in a lottery to receive applications due to the limited number of spaces.



Learn more about Lions Camp at [wisconsinlionscamp.com](http://wisconsinlionscamp.com)



## About Eyeglass Recycling

### Eyeglass Recycling

Your old eyeglasses can bring the world into view for a person in need! Our center is one of 19 Lions Clubs International Certified Recycling Centers in the world.

On average, we collect and process over 1 million pairs of used eyeglasses annually.

Once the glasses are sorted, cleaned, read and packaged, they are shipped to many different developing countries around the world which have little to no access to eye health services. Many different organizations take volunteers on organized missions to those countries to fit individuals with glasses from our Center free of charge.

To donate your used eyeglasses, you can deposit them into eyeglass collection containers found in various businesses across Wisconsin. To find a location near you, visit [wlf.info/our-work/eyeglass-recycling](http://wlf.info/our-work/eyeglass-recycling) or mail them to our Eyeglass Recycling Center at:

**3834 County Road A  
Rosholt, WI 54473**

If your business or organization is interested in collecting eyeglasses for us or volunteering in our Center, please contact our Project Director at [kmueller@wlf.info](mailto:kmueller@wlf.info).



Learn more about Eyeglass Recycling at [wlf.info/our-work/eyeglass-recycling](http://wlf.info/our-work/eyeglass-recycling)





## About Vision Screening

### Vision Screening

Our Vision Screening Project is run in partnership with KidSight USA. The goal is to screen all children ages six months through 18 years for vision issues, with the emphasis on children enrolled in daycare centers and preschools.

Vision Screening is critical, because early detection and treatment ensures every child the best possible chance to succeed in learning. Nearly 85% of a child's learning is sight-related, and a child may not know they have an issue because the brain compensates for poor vision.

Wisconsin Lions members do most of the screening for this project and can become certified children vision screeners through WLF or KidSight USA. Once they complete the training and receive their certification, they are able to screen children in their communities.

Learn more about our Vision Screening project by visiting

[wlf.info/our-work/vision-screening](http://wlf.info/our-work/vision-screening) or visit the Kids Sight USA website at [lionskidsightusa.org](http://lionskidsightusa.org).



Learn more about Vision Screening by visiting [wlf.info/our-work/vision-screening](http://wlf.info/our-work/vision-screening)





## About Hearing

### Hearing

Over 26 million Americans have hearing loss, making it the most common and widespread form of physical disability in the United States. It is a “silent” disability evoking little public recognition.

The Hearing Project offers hearing aids free of charge, or at a low cost, to Wisconsin residents who qualify under our eligibility requirements. The hearing aids are funded by collecting used hearing aids and recycling them for credit, as well as donations from individuals, Lions clubs and other organizations.

Potential recipients must fill out an application, which can be obtained by calling the WLF Office or downloaded from our website at [wlf.info/hearing-resources](http://wlf.info/hearing-resources). Applications are reviewed for eligibility and qualified recipients will be notified of the next steps.

Hearing aid collection containers can be obtained free of charge, from the WLF Office.



Learn more about Hearing at [wlf.info/our-work/hearing](http://wlf.info/our-work/hearing)



## About Diabetes Awareness

### Diabetes Awareness

We are committed to fighting the diabetes epidemic by raising awareness and educating communities and individuals about their risk. WLF and our partners have created a comprehensive program centered around prevention, reducing risk and resources available about diabetes. We partner with Chronic Disease Prevention Program, Wisconsin Department of Health Services, Division of Public Health and National Kidney Foundation of Wisconsin (NKF) to provide resources at [wlf.info/our-work/diabetes-awareness-resources](https://wlf.info/our-work/diabetes-awareness-resources)



There are many resources available including videos, brochures and other educational materials. The Wisconsin Lions Foundation also works to promote awareness during Diabetes Alert Day and National Diabetes Awareness Month each year.

**6,000**

Wisconsin Youth (>18)  
**have type 1 or  
type 2 diabetes**

**526,000**

Wisconsin Adults (<18)  
**have type 1 or type 2  
diabetes**

**1.5M**

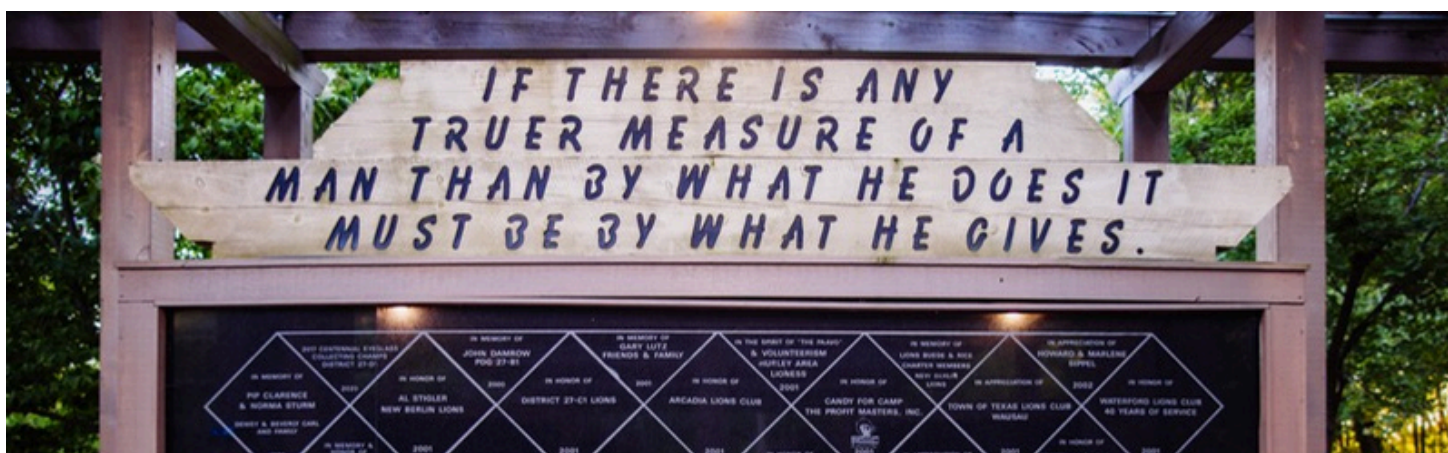
Wisconsin Adults  
**have prediabetes**

#### Data Sources

DHS, WISH,  
Behavioral Risk  
Factor Survey  
Module, 2021  
CDC Diabetes  
Surveillance Report,  
2022, Table 1a.  
DHS WISH,  
Population Module,  
2020

Learn more about Diabetes Awareness by visiting [wlf.info/our-work/diabetes-awareness](https://wlf.info/our-work/diabetes-awareness)





## Ways to Give

### Make a Difference

The Wisconsin Lions Foundation (WLF) has a variety of opportunities for you, your club, your organization and your community to make a difference. Learn more by visiting [wlf.info/make-a-difference](http://wlf.info/make-a-difference) or designate your donation virtually by visiting [wlf.info/donate](http://wlf.info/donate). Selecting “As you see fit,” allows WLF to use your donation where it’s needed most!

### Wall of Honor

Our Wall of Honor is designed to recognize clubs, members, friends and businesses for their support of the Wisconsin Lions Foundation. Donations can be made in memory of someone, to honor someone or to recognize a special occasion.

#### Amount: \$500

Used for: Building Fund

Partial Payment: Yes - two payments of \$250 each

Recognition: Engraved oak block on the Wall

Learn more at [wlf.info/wall-of-honor](http://wlf.info/wall-of-honor)

### Friends & Honor Garden

The Friends and Honors Garden is a beautiful flower, tree, and butterfly garden recognizing clubs, members, friends and businesses for major contributions and can be made in memory of someone or to recognize a special occasion.

#### Amount: \$2,500 and \$5,000

Used for: Donors Choice

Partial Payment: Yes - with a signed pledge agreement

Wish List and in-kind item(s) qualify as a donation, as long as the value is equal to \$2,500 or \$5,000

Learn more at [wlf.info/friends-honor-garden](http://wlf.info/friends-honor-garden)



### Lions Foundation License Plates

Anyone, Lion or not, can support WLF and promote Lionism in Wisconsin by purchasing a specialty license plate.

Things to know:

- Lions Foundation license plates can feature regular numbers or a personalized message
- A \$25 annual donation (included in your annual renewal cost) supports WLF
- A \$15 fee is required each year in addition to the regular annual registration fee and donation for personalized plates

The following vehicles qualify for Lions Foundation license plates:

- Automobiles
- Motor homes (annual registration only)
- Motor trucks - 4,500, 6,000 or 8,000 pound gross weight including dual purpose farm and dual purpose motor home, and 12,000 pound gross weight farm truck

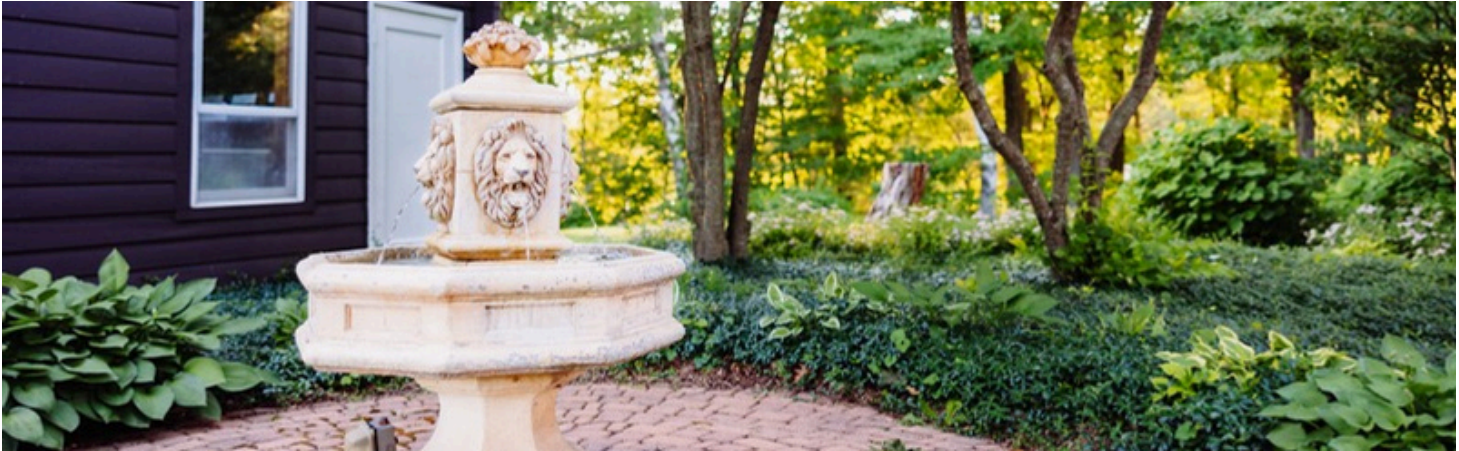
For more information and how to apply, visit

[wlf.info/lions-license-plates](http://wlf.info/lions-license-plates)

#### If you have questions:

- Email: [special-plates.dmv@dot.wi.gov](mailto:special-plates.dmv@dot.wi.gov)
- Call: (608) 266-3041 (M-F 8:00 a.m. - 4:30 p.m.)





## Other Ways to Give

### Wish List

While there is always a need for monetary donations, WLF has two wish lists available for those who prefer to purchase specific items for WLF and the needs of our projects. Both lists can be found on our website at [wlf.info/wish-list](http://wlf.info/wish-list).



### Camp for Kids Raffle

This is our annual raffle to raise funds for the Wisconsin Lions Camp. Tickets are available for \$10 each with a chance to win cash prizes. Please contact us at (715) 677-4969 or [wlf@wlf.info](mailto:wlf@wlf.info) for further information. The drawing is usually in September.

Prizes are as follows:

- 1st Prize - \$2,500
- 2nd Prize - \$1,500
- 3rd Prize - \$1,000
- 4th-8th Prizes - \$500 each
- 9th-18th Prizes - \$250 each

### Deer Hides for Lions Camp

This program started in 1988 while Lion Bernie Stuttgen of 27-C1 was talking with a few Lions regarding the annual deer hunting season and discussing how many deer hides are thrown out. He and the Thorp Lions decided to collect these deer hides, salt them down and sell them with all the proceeds going to support Wisconsin Lions Camp. That year, a total of \$399 was raised for the general fund for Camp. The Deer Hide Collection Program started out locally, expanded regionally and is now statewide, becoming the largest fundraiser for WLF.

Individuals, clubs and communities are encouraged to participate with WLF to collect deer hides for Lions Camp. It is our hope you choose to join numerous clubs throughout the State of Wisconsin who understand the importance of this program and its support of Lions Camp. To find a deer hide drop-off location near you, visit [wlf.info/deer-hide-collection](http://wlf.info/deer-hide-collection)







## Other Fundraising Events

### Annual Birch-Sturm Memorial Golf Outing

This event supports all five projects of the Wisconsin Lions Foundation: Lions Camp, Eyeglass Recycling, Hearing, Diabetes Awareness and Vision Screening. You do not have to be a Birch-Sturm Fellow to participate. The event consists of a four-person scramble with a Shot Gun Start. Participants can win hole events, door prizes, raffles and a Hole in One contest with a \$10,000 cash prize. Dinner will also be served after golfing.

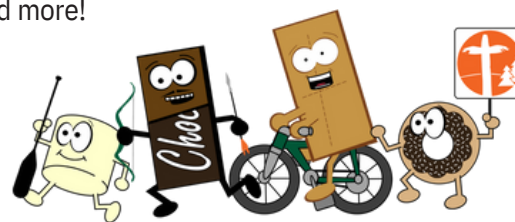
If you are not a golfer, you can support us as a sponsor. This is an excellent way to promote a club, an event or simply advertise a business.



### Hustle S'more & S'more Fun at Lions Camp

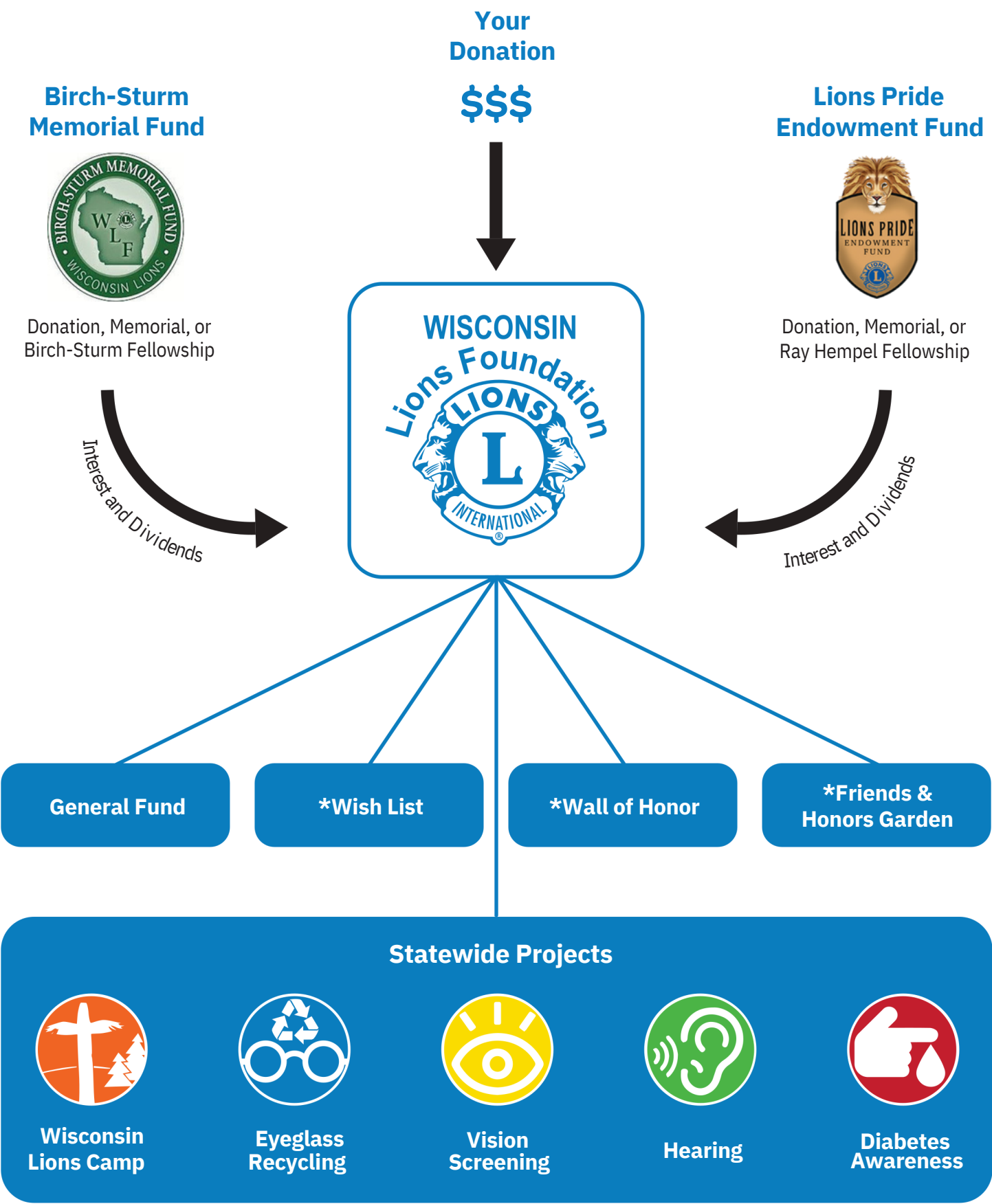
This event helps us continue to provide Camp free of charge. Morning events include a 1-mile Donut Dash for those who enjoy a slower pace, 5k run/walk, 10k run, or a 15-mile bike ride. The afternoon allows participants to experience some of Camp's most beloved activities including the adventure course, boating, swimming, wagon rides and more!

If you are not able to attend, support us as a sponsor or fundraiser.



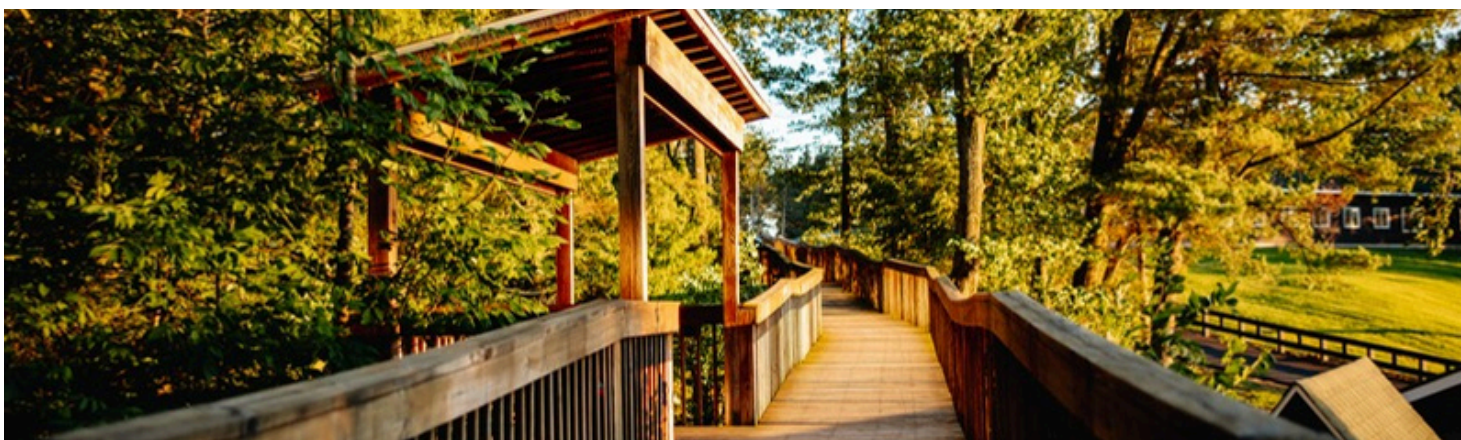
Learn more at [wlf.info/events](http://wlf.info/events)

# Where Your Donations Go



\*For Lions clubs, remember donations to the Wish List, Wall of Honor, Friends & Honors Garden, Lions Pride Endowment or Birch-Sturm Memorial Fund are not considered part of your Annual Donation





## Come Visit Us

### Visitor Days & Tours

We invite you on select Wednesdays throughout the summer to meet our dedicated staff, learn more about the five statewide projects and see the impact we have throughout the state and beyond. Visitor Days include a welcome in the Board Room, wagon or pontoon tour of the facility, tours of the Friends & Honors Garden, Lions Camp, Eyeglass Recycling Center and shopping at our Trading Post.

Spaces are limited and advance reservations are required by calling (715) 677-4969 or emailing [ppotter@wlf.info](mailto:ppotter@wlf.info). Reservations for the upcoming summer Visitor Days open each January. All are welcome to attend.

### Spring, Fall & Winter Lions Club Tours and Meetings

Lions Clubs who would like their entire club to visit our facility outside of the summer months may schedule a tour or club meeting at Camp. Tour options include a walking tour of Camp, wagon ride (*based on availability*), tour of the Eyeglass Recycling Center and a Trading Post visit.

Club meetings may be scheduled in the Rec Shelter or WLF Board Room based on availability and grills are available for use. Due to the facility being rented by private groups throughout the year, advance reservations are required. Weekday reservations are preferred with weekend reservations considered on a case-by-case basis.

### Camper Tours

Current or prospective campers and their families may schedule a private tour of Camp any time of the year. Advance reservations are required and can be made by contacting the Camp Office at (715) 677-4969 or emailing [info@wisconsinlionscamp.com](mailto:info@wisconsinlionscamp.com).

### Rental Group Tours

Current or prospective rental groups may schedule a private tour of Camp any time of the year. Advance reservations are required and can be made by contacting our Rentals Office at (715) 677-4969 or emailing [rentals@wisconsinlionscamp.com](mailto:rentals@wisconsinlionscamp.com).

### General Public Tours

We welcome anyone to come to our facility to learn more about the work of WLF. Advance reservations are required and can be made by contacting us at (715) 677-4969 or emailing [ppotter@wlf.info](mailto:ppotter@wlf.info).



Learn more at [wlf.info/visitor-us](http://wlf.info/visitor-us)





## Be Our Guest

### Wisconsin Lions Camp Rentals

Our facility is available for rent when Summer Camp is not in session. The typical season runs from mid-August thru Memorial Day weekend. Our friendly staff have experience working with groups of all sizes.

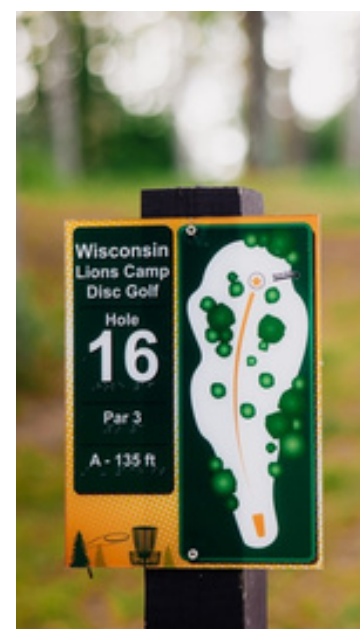
Examples of events we have hosted in the past include:

- Baby/Bridal Showers
- Birthday Parties
- Business Meetings and Conferences
- Craft/Quilting/Scrapbooking Retreats
- Family Reunions
- Fishing Trips
- Non-Profit Events and Retreats
- School Field Trips
- Teambuilding Retreats for Sports Teams and Organizations

Funds from our rentals program support the five statewide projects of WLF. Our Rentals Team is ready to work with you to customize your next event. Call us at (715) 677-4969 or email [rentals@wisconsinlionscamp.com](mailto:rentals@wisconsinlionscamp.com) for more information.

### Wisconsin Lions Camp Disc Golf Course

Our 18-hole disc golf course is open to the public at various times throughout the year. The green fee is \$5 per round for the general public or free for our overnight rental guests. The green fees generated go to support our five statewide projects. Season passes are now available. Follow Wisconsin Lions Camp Disc Golf Course on Facebook or on our website at [wisconsinlionscamp.com/discgolf](http://wisconsinlionscamp.com/discgolf) for more information and open course dates.



Learn more at [wisconsinlionscamp.com/rentals](http://wisconsinlionscamp.com/rentals)



3834 County Road A  
Rosholt, Wisconsin 54473

Website: [www.wlf.info](http://www.wlf.info) • Email: [wlf@wlf.info](mailto:wlf@wlf.info)

Phone: 715-677-4969 • Toll Free: 877-463-6953 • Fax: 715-677-4527